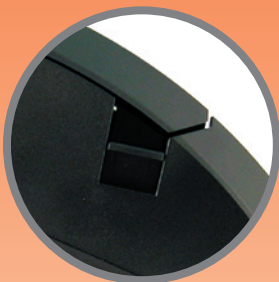


POS Printer AURA-6800 Series



Drop-and-load structure for paper roll loading



Paper jams can be solving by push the "Hood Release Button" directly

Features

- Paper jams can be solving by push the "Hood Release Button" directly
- Default with serial interface, option for parallel ,USB or LAN interface by plug in module
- Fast-speed printing (150mm per second)
- Supports application environment of Windows or OPOS or Linux
- Supports enhancement capability in kitchen bell for reminder function
- Low noise thermal printing
- Drop-and-load structure for paper roll loading
- Cash drawer control up to 2 cash drawers



Multi-color indicator to show the status of printer



Default with serial interface, option for parallel ,USB or LAN interface by plug in module

❖The product information and specifications are subject to change without prior notice.

Specification		AURA-6800
Interface	Serial Port (RS-232), Parallel, Lan or USB	
Printing Method	Thermal dot line method	
Printing Speed	150mm/sec	
Paper Width	80mm	
Maximum Printable Width	72mm (for 576 dots/line)	
Default Printing Width	64mm (for 512 dots/line)	
Paper Feed Method	Friction auto-feed	
Paper Load Method	Drop and use	
Auto-Cutter Type	Guillotine type	
Auto-Cutter Capability	Partial cut (1 point at center left)	
Manual cutter	Saw tooth blade	
Indicators	Power: Green, Error: Red, Paper Out: Red	
Sensors	Hood Lock, Paper Near End, Paper Out, Overheat	
Language Support		
International Character Set	15 international character sets supported (Denmark I , Denmark II , Ex-Jugoslavia, France, Germany, Italy, Japan, Korea, Latin America, Norway, Spain, Spain II , Sweden, UK, USA	
Character Code Page	23 code pages supported (Power on default code page can be set infactory by software program)	
Bar Code Printing	UPC-A/E, EAN13/8, ITF, CODE39/93/128, CODABAR	
Accessory		
Paper Guide Adaptor	Optional 58 mm paper guide adaptor	
Kitchen Bell	Optional	
Wall mount kit	Optional	

